



Auction One

Friday 7 pm 1st May 2015
Viewing from 4pm

Caloundra AFL Hall
North St Caloundra

Sunshine Coast Antiques & Collectables
Fair weekend

A Multi-vendor Auction
Including Ginger Beers, Coddys,
Lamonts, Potlids, Hamiltons, Bitters,
Inks, Brewing Water Jugs
& More

Food & Drinks available

Full Absentee and Phone Bidding
Facilities available



Nick Rowland Auctions

0401 641 202

P.O.Box 194
Carole Park, QLD, 4300

nic_rowland@hotmail.com





1



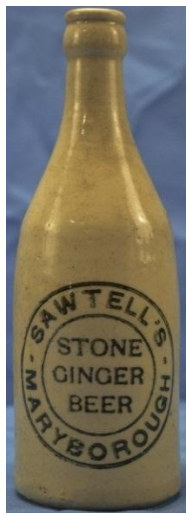
2



3



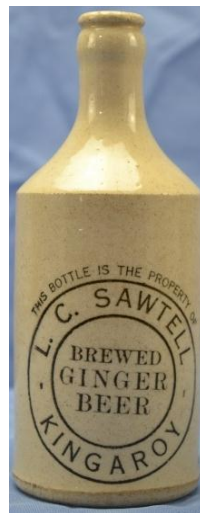
4



5



6



7



8



9



10



11



12



13



14



15



16



17



18



19



20



21



23



24



25



26



28



26



30



29



27



31



32



If you would like more Pictures or
have any questions regarding
condition of an item please contact
Nick 0401641202 or
nic_rowland@hotmail.com

< 33

34 >



35



36



37



38



39



40



41



42



43



44



45



46



47



48



49



50



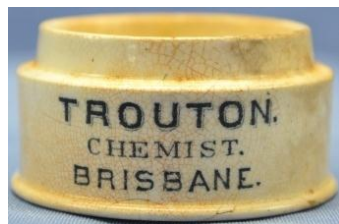
51



52



53



55



56



57



58



59



60



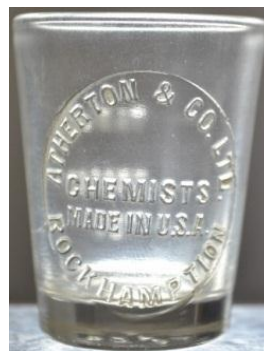
54



61



62



63



64



65



66



67



68



69



73



74



71



72



75



76



78

Nick Rowland Auctions - Auction ONE - May 2015

Auction Day: 1

1	Ginger Beer - Champ - C/S, A/W, John Blackley Maryborough. Lovely bottle with minor marks.	Near Mint	450 - 500
2	Ginger Beer - Champ - C/S, Tan Top, Roberts Bros. Mackay, Paragon Ginger Beer, t/m. Superb condition with very minor lip graze most likely from opening the bottle. (approx 0	Near Mint	350 - 400
3	Ginger Beer - Champ - C/S, Blue Top, Rae Bros. Mackay, Stone Ginger Beer. Superb condition with very minor lip graze most likely from opening the bottle. (under 1cm)	Near Mint	1250 - 1500
4	Ginger Beer - Champ - C/S, Tan Top, J & E Cushan Gunnedah, Bee Brand, t/m. Good condition with marks to the lip and minor marks to the base.	Very Good	175 - 200
5	Ginger Beer - Champ - C/S, A/W, Sawtell's Maryborough, Stone Ginger Beer. Bottle is in "as dug" condition, unusual glaze line across the neck of the bottle which does not seem to be deep enough for a crack, other minor marks and discoloration.	Good	350 - 400
6	Ginger Beer - Champ - C/S, Tan top, Ice and Areated Waterworks, Gordon Vale, Stone Ginger beer. Two chips to the lip, bottle has thin glaze with minor rust marks and staining, hard to get North QLD item.	Fair	50 - 70
7	Ginger Beer - Dump - C/S, A/W, L.C.Sawtell Kingaroy, Brewed Ginger Beer. A superb example with an excellent strike. Very minor marks.	Near Mint	150 - 200
8	Codd - 15oz - All way pour, J.Fletcher, Koroit St Warrnambool, Ginger Ale. Beautiful water found bottle with opalised effect, excellent condition with very minor scratches and marks.	Near Mint	375 - 425
9	Codd - 13oz - All way pour, Fendley Bros, Bairnsdale, Soda Syphon t/m. Superb bottle with some minor scratches and marks.	Near Mint	325 - 375
10	Codd - 13oz - All way pour, Evan Rowlands late Rowlands & Lewis, Ballarat & Melbourne, minor and farmer t/m (in shield). Bottle has been lightly polished and has come up a treat, with minor marks.	Polished	300 - 350
11	Codd - 13oz - 4 Tear Drops, F.R.Sayers, Glen Innes, Lemonade. In superb conditon, minor marks to some of the letters on embossing. Small burst air bubble to front. Hard to get.	Near Mint	150 - 200
12	Codd - 13oz - Midsons Patent, Burtons & Co, Brisbane, Monogram t/m. Bottle is in water found condition with pitting and minor cloudiness, good example that would benefit from a light polish.	Good	75 - 100
13	Codd - 13oz - one way pour, safe groove patent, J.T.Shepherd & Co, Geraldton, star works t/m. Scratches and general cloudiness to the back, excellent strike would benefit from a light polish.	Good	150 - 200
14	Codd - 13oz - Patent, J.M Hickey, Killarney. Superb example of a South East Qld Bottle.	Mint	100 - 150
15	Crown Seal 6oz - Skittle, Bonnah Spa Water Co Ltd, Brisbane. Water found bottle with Opal effect, super hard to get.	Good	75 - 100
16	Crown Seal 6oz - Brisbane Aerated Water Co Ltd, Brisbane, Cross Flags t/m. Different variation, nice blue-green colour with rippled effect behind logo.	Mint	100 - 125
17	Crown Seal - 6oz - Skittle, Barron's Cordial Works, Townsville, Monogram t/m. A super rare bottle, chipping to base, minor marks and general cloudiness.	Fair	60 - 80
18	Crown Seal - 6oz - Skittle, M&AW Works, Kingaroy, Soda Water, FIZ t/m Small burst air bubble, minor marks and wear.	Very Good	40 - 60
19	Crown Seal - 10oz - Dump, C.Harris, Maryborough (QLD), Excellent condition with very minor sractches, hard to get.	Near Mint	100 - 120
20	Crown Seal - 10oz - Williams & Son, Chinchilla, Rabbit t/m. Hard to find in this condition.	Near Mint	125 - 150
21	Crown Seal - 6oz - Bunworth & Co, Queensland, "Usque Presto", Australia t/m. Minor marks and cloudiness, hard to get in this condition.	Very Good	50 - 75
22	Whisky Crock - A.G.Thomson & Co Glasgow, Jeroboam, The Royal Blend, Deer t/m on White Seal. Small hairline to lip and small chip to seal t/m. A great item which could do with a clean.	Very Good	75 - 100
23	Whisky Crock - W.Williams & Sons Aberdeen, "The Forty Second", Fine Old Highland Whisky, tartan and weapons t/m. Minor rust staining to rear, a great item.	Very Good	350 - 400
24	Whisky Crock - A.G.Thomson & Co Glasgow, Jeroboam, The Royal Blend Whisky, Deer t/m, Floral and Vine Pattern. Super condition, minor lip nibbles and marks.	Very Good	50 - 75
25	Group Lot - Dewars Whisky Jugs x 5 - 1 x Ice Bucket 1 x Ash Tray Diana Pottery 1 x Water Jug Diana Pottery 1 x Water Jug with Saucer Wade England All in excellent condition.	Very Good	80 - 100
26	Group Lot - Johnnie Walker x 4 - 2 x Wade Pottery Water Jugs, 1 x Black Label Wade Pdm Water Jug, 1 x James Green & Nephew London with some cracks and crazing	Fair	60 - 80
27	Group Lot - Teacher's Whisky Jugs x 4 - 2 x Wade Pottery, 1 x Burleigh Ware, 1 x Unknown with minor crack to spout.	Fair	50 - 60

Nick Rowland Auctions - Auction ONE - May 2015

28	Group Lot - Haig Scotch Whisky Water Jugs x 3 - 1 x Red Water Jug Carlton Ware, 1 x Small Red Water Jug made in England, 1 x White Water Jug Potter Unknown.	Good	60 - 75
29	Group Lot - McCallums x 6 - 3 x Face Jugs Potter Unknown, 2 x Face Jugs Elischer Australia, 1 x Water Jug Wade Pottery England.	Very Good	60 - 75
30	Group Lot - Beef Eater Gin x 4 - 2 x Water Jugs with Turrets by Wade, 1 x Water Jug by Wade, 1 x Ashtray by Wade.	Very Good	50 - 60
31	Group Lot - advertising water jugs x 5 - 1 x Small size Tullamore Dew, 1 x Small size Jamesons, 1 x All White Canadian Club, 1 x All Blue Canadian Club, 1 x Paddy, Cork Distilleries. All have minor marks.	Very Good	50 - 60
32	Group Lot - Black & White Scotch Whisky x 5 - 3 x Tall Water Jugs by Wade Potteries, 1 x Small Jug by Wade Potteries, 1 x Advertising Piece Featuring Black & White Dogs.	Very Good	75 - 100
33	Group Lot - Johnnie Walker x 2 - 1 x Small size Plastic Johnnie Walker Figurine, 1 x Water Jug by Florenz Australia.	Very Good	75 - 100
34	Group Lot - Beenleigh Rum Water Jugs x 2 - 1 x Bosun Bill Face Jug, White/Light Blue, Elischer Australia, 1 x Clear Glass Water Jug, Sand Blasted with "Beenleigh Pot Still Rum" Both in Good Condition with minor marks.	Very Good	125 - 150
35	Vinegar - 20oz - Grimples Vinegar, Light internal haze and very minor marks, beautiful bottle that needs a clean.	Very Good	250 - 300
36	Vinegar - 20oz - Midland Vinegar, very minor marks, a stunning early bottle.	Near Mint	100 - 150
37	Bitters - 26oz - Honey Yellow, Milwaukee Hop Bitters (Sydney), eagle t/m. 1.5cm chip to rear lip, 2cm crack in the neck, rear corner has 3cm slither missing most likely from manufacture. A gorgeous Early Australian Piece filled with air bubbles and has an excellent strike.	Fair	3000 - 3500
38	Beer - 26oz - Corker, Emerald Green, The Fosters Brewing Co Vic, monogram t/m. Excellent example which could benefit from a clean, minor marks.	Very Good	50 - 80
39	Beer - 26oz - C/S, Green, Brisbane Bottle Exchange Queensland, Large Size Binoculars t/m. Surface and Crate Ware, minor pitting and marks, an impressive bottle.	Good	50 - 70
40	Cordial - 26oz - Ring Seal, J Bardsley's & Co Sydney, Apex t/m. Light Internal Haze, Dirt and Rust Stains, minor crate ware, an unusual cordial.	Very Good	100 - 150
41	Cordial - 26oz - Corker, Red Amber, Pioneer Brand. Superb bottle with minor crate wear.	Very Good	75 - 100
42	Seal Bottle - 26oz - Ring Seal, Green, Fratelli Branca, Milano. Minor wear	Very Good	60 - 80
43	Black Glass - Demijohn - 37cm high x 15cm diameter, Dark Green/Black Glass Bottle, Super Early with hudreds of air bubbles and pontil Base. Large Manufacturing Flaws to side of bottle incl a large open air bubble. An impressive talking piece.	Very Good	200 - 250
44	Dutch Onion - Ring Seal, Green, Super Early Bottle with Pontil to base. Lip shows signs of buffing, small 1cm crack to side of bottle, minor wear and marks. A great early piece.	Good	150 - 200
45	Fruit Jar - Half Gallon - A.S.R.Co. Ltd, Sugar Refiners Cane Brand Melbourne, Featuring Sugar Cane Branches. Chip and minor nibbles to rim otherwise very clean example, in outstanding condition.	Very Good	150 - 200
46	Preserving Jar - 2 Pounds - Unusual Open Lided Glass Jar, Embossed "Greenslade Reg", attributed to Greenslade Apiaries Indooroopilly (QLD). 2cm impact mark and minor lip nibbles, most likely from usage. Good clean bottle with minor haze. An unusual Australian Piece	Good	100 - 150
47	Preserving Jar - 2 Pounds - Rolled Lip, W.H.Dunsdon, Waverley Apiaries, Toowoomba, Pure Honey, Beehive t/m. Light internal haze, otherwise in excellent condition.	Very Good	375 - 425
48	Preserving Jar - 1 Pound - Pottery Jar A/W, Wollston Farm, Butter, (George Town Qld), no lid, great condition with minor marks, a super North Queensland Piece.	Near Mint	425 - 475
49	Amonia Bottle - Medicine Lip, Teal Green, Greers Household Amonia, Australian Coat of Arms t/m. Light Internal Haze and Minor Marks.	Very Good	40 - 60
50	Remedy Bottle - Bulk Size - Clear Glass, H.E.Kugelman's Herbal Magnetic Remedies New York, Melbourne, Sydney, Adelaide, Brisbane and New Zealand. 1.5cm hairline crack in neck and Light Internal Haze.	Very Good	40 - 60
51	Remedy Bottle - 17cm Tall - Amber Glass, Clements Tonic, Sydney, Australia, An excellent example and the "best we've seen".	Mint	40 - 50
52	Lysol - 10cm Tall - Clear glass, Ockelfords Ltd, Brisbane. In stunning condition.	Mint	20 - 30
53	Eucalyptus/Hair Restorer - Clear Glass, Australian Eucalyptus Hair Viggor. Good Condition with Light Internal Haze. A rare early bottle	Very Good	175 - 200
54	Chemist Bottle - 8.5cm Tall - Cobolt Blue, Mortimer Chemist/Dentist, Casino, Poison. Small 0.5cm Slither from Lip to the Rear of the Bottle. A stunning example with minimal exterior haze.	Good	175 - 225

Nick Rowland Auctions - Auction ONE - May 2015

55	Pot Lid Base - Small - Trouton Chemist Brisbane, Item is completely in tact with three cracks running from the outside base to the centre of the pot. Rust and crazing marks. A scarce Queensland Pot Base.	Poor	75 - 125
56	Pot Lid - Blue Background, F.S.Cleaver's Unrivalled Cherry Toothpaste, Monogram t/m. Scratches to face, 1 x 0.5cm chip to rear rim, other minor chips and imperfections. Nice looking coloured lid.	Fair	40 - 60
57	Pot Lid - Red Writing, Thomason's Queensland Ointment, Chemist and Dentist, South Brisbane and Woolloongabba, Australian Coat of Arms t/m. 1cm crack/chip to face of lid, 2x minor chips to rear rim of lid, A great Brisbane Peice worthy of repair.	Fair	300 - 350
58	Pot Lid - Miniture - John Gosnell & Co London, Cherry Toothpaste, Free Sample, Queens Head t/m comes with base. Pot Lid has very minor markings to rear rim, otherwise in superb condition.	Very Good	275 - 300
59	Pot Lid - W.J.Page, Toothpaste, Chemist, Brisbane, Face in superb condition, with 1cm chip and a 1cm crack to rear rim. A piece worthy of restoration.	Fair	250 - 300
60	Pot Lid - W.J.Page, Cold Cream, Chemist, Brisbane. 3cm hair line crack to face, as well as minor crazing. A rare piece that will clean well.	Fair	300 - 350
61	Eye Bath - Light Green Glass, Eye Bath. In lovely condition.	Mint	40 - 60
62	Eye Bath x 2 - 1 x Green Eye Bath, 1 x Amber Eye Glass, made in the carnival style glass. "Very Pretty"	Mint	40 - 60
63	Dose Measure - 1 Tbsp - Atherton & Co Ltd, Chemists, Rockhampton. In perfect condition, noticed the wrong spelling of "Rockhampton".	Mint	150 - 200
64	Dose Measure - 1 Tbsp - L.A.Wilkinson, Chemist, Brisbane, minor mould lines across embossing otherwise an awesome piece.	Mint	150 - 200
65	Baby Feeders x 2 - 1 x The Hygienic Feeder, in superb condition, with minor surface scratches. 1 x The Allenburys Feeder, 2x small fish eyes, one on the finger hole and one the side of feeder. with internal haze. Hard to get.	Good	25 - 50
66	Group Lot - Pot Lids x 6 -	Not Applicable	0 - 0
67	Group Lot - Pot Lids x 3 -	Not Applicable	0 - 0
68	Group Lot - Ceramic Pots x 6 -	Not Applicable	0 - 0
69	Group Lot - Pot Lids x 3 -	Not Applicable	0 - 0
70	Bulk Inks x 2 - Clear Glass Ink with Pouring Lip, Simpson's Ink Ltd Australia. Both with Paper Labels, 1 x Scarlett, 1 x Blue/Black.	Very Good	30 - 60
71	Glue/Gum - 12oz - Midson Glass, James Smith & Co Ltd, Brisbane, "Stix All". Small manufacturing flaw on shoulder, otherwise and excellent bottle.	Very Good	20 - 30
72	Glue/Gum - 12oz - Blue Glass Cone, The Gloy Manufacturing Co London, very minor lip nibbles, a really nice item.	Very Good	30 - 40
73	Glue/Ink x 3 - Bell Shape, 1 x Judsons Gum, 1 x Judson & Sons Double Gum, 1 x F.M & Co Ink.	Good	20 - 30
74	Inks x 3 - Angus & Co Ink Melbourne, 1 x Cotton Reel, 1 x Cone, 1 x Conical. All in great condition.	Very Good	30 - 50
75	Ink Desk - Teal Green, M & C Ltd, Great colour & condition.	Very Good	40 - 50
76	Ink Cotton Reel - Swirl Amber - Yellow - Green, Carr's Ink. a nice piece with a heavily sheared top.	Very Good	40 - 50
77	Ink - Ceramic, Watson Ferguson & Co, Brisbane. Most likely manufactured by Queensland Potteries, small rust stains and 1 pull mark to base. Minor wear and marks. A really rare Brisbane Piece.	Very Good	125 - 175
78	Ink - Cone - Large Size Cone Ink Attributed to Ipswich Potteries embossed "B.A Melsom Brisbane", small chip to base most likely a pull mark displays very well.	Very Good	175 - 225
79	Hamilton - Half Size - Light Blue unembossed surface wear and marks.	Good	30 - 50
80	Hamilton - Full Size - Early Hamilton Embossed "Brisbane", Owner Unknown	Good	75 - 125
81	Hamilton - Full Size - Helidon Spa Water Co Brisbane. Very minor manufacturing flaw to rolled lip only mentioned for accuracy. Stunning bottle the best example i have seen.	Mint	125 - 175
82	Hamilton - Full Size - J. Schweppe & Co Ltd London, Sydney & Melbourne, Fountain t/m. Super condition.	Mint	60 - 80
83	Hamilton - Full Size - S.Greene & Co, Fitzroy, Lion t/m. Minor Lip Nibbles and Scratches.	Good	80 - 120
84	Maugham - Olive/Dark Green, Super Early Maugham with no embossing. In Super Condition.	Very Good	150 - 175
85	Hamilton - Half Size - Ice Blue, No embossing, surface marks haze and wear.	Very Good	20 - 30
86	Hamilton - Full Size - Geo.Elliott, Deniliquin, Rooster t/m. Light embossing with some minor lip nibbles	Good	100 - 150

Nick Rowland Auctions - Auction ONE - May 2015

87	Hamilton - Full Size - Ice Blue, M,McDonald, Madeline Street, Melbourne & Ballarat, Crown t/m. Minor Lip Nibbles and marks.	Good	50 - 75
88	Wine - 14cm Tall - Dark Purple/Black, All Saints, Wahgunyah (Victoria). Minor Surface Scratches. Super Rare.	Very Good	300 - 350
89	Gin - Full Size - Light Amber, Avan Hoboken, Samuel Allen & Sons Ltd (Queensland), a nice piece in extraordinary condition.	Mint	75 - 125
90	Gin - Half Size - A.C.A Nolet, Schiedam, Nice piece in excellent condition	Near Mint	30 - 50
91	Milk - Imperial Pint - Wide mouth, Queensland Farmers, Co-operative Assoc. Ltd, BOOVAL. A hard to get bottle with very minor marks	Near Mint	50 - 75
92	Group lot - Books x 34 approx - Antique Bottle & Collectables Magazine early 90's and others	Good	125 - 175
93	Box Lot - Gins - - FLOOR BIDDERS ONLY	Not Applicable	0 - 0
94	Box Lot - Gins & others - - FLOOR BIDDERS ONLY	Not Applicable	0 - 0
95	Box Lot - Schweppes - - FLOOR BIDDERS ONLY	Not Applicable	0 - 0
96	Box Lot - Inks - - FLOOR BIDDERS ONLY	Not Applicable	0 - 0
97	Box Lot - Household Bottles - - FLOOR BIDDERS ONLY	Not Applicable	0 - 0
98	Box Lot - Ginger Beers - - FLOOR BIDDERS ONLY	Not Applicable	0 - 0
99	Box Lot - Ginger Beers - - FLOOR BIDDERS ONLY	Not Applicable	0 - 0
100	Box Lot - Ginger Beers - - FLOOR BIDDERS ONLY	Not Applicable	0 - 0
101	Box Lot - Ginger Beers - - FLOOR BIDDERS ONLY	Not Applicable	0 - 0
102	Box Lot - Ginger Beers - - FLOOR BIDDERS ONLY	Not Applicable	0 - 0
103	Box Lot - Inks - - FLOOR BIDDERS ONLY	Not Applicable	0 - 0
104	Box Lot - Black Glass - - FLOOR BIDDERS ONLY	Not Applicable	0 - 0
105	Box Lot - Salad Oils - - FLOOR BIDDERS ONLY	Not Applicable	0 - 0
106	Box Lot - Household Bottles - - FLOOR BIDDERS ONLY	Not Applicable	0 - 0
107	Box Lot - Household Bottles - - FLOOR BIDDERS ONLY	Not Applicable	0 - 0
108	Box Lot - Crown Seals - - FLOOR BIDDERS ONLY	Not Applicable	0 - 0
109	Box Lot - Marbles & Ginger beer - - FLOOR BIDDERS ONLY	Not Applicable	0 - 0
110	Box Lot - Blob Top Sodas - - FLOOR BIDDERS ONLY	Not Applicable	0 - 0
111	Box Lot - Areated Waters - - FLOOR BIDDERS ONLY	Not Applicable	0 - 0
112	Box Lots - Lamonts - - FLOOR BIDDERS ONLY	Not Applicable	0 - 0
113	Box Lot - Warners - - FLOOR BIDDERS ONLY	Not Applicable	0 - 0
114	Box Lot - Jars - - FLOOR BIDDERS ONLY	Not Applicable	0 - 0
115	Codd - 6oz - All way pour, A.V.Cowap, Launceston, kangaroo trademark. Minor wear and marks otherwise in great condition.	Very Good	100 - 125
116	Codd - 6oz - patent, light amethyst, KOPS Brisbane. Great example with very minor marks and wear.	Near Mint	100 - 150
117	Codd - 6oz - Patent, light amethyst, CHAS.COLE & CO Aearated Waters, Geelong, bird and fish t/m. Bottle has been polished and shows sign of pitting. A great pictorial piece.	Polished	150 - 200
118	Codd - 6oz - Patent, Chester Lodge Cordial Works, Sydney, with anchor t/m. Very light marks and scuffs, in great condition best I've seen.	Near Mint	100 - 150
119	Blob Top Soda - 6oz - Skittle, Cascade Brewery Co. Hobart and Strahan. Bottle is in excellent condition.	Near Mint	60 - 80
120	Blob Top Soda - 6oz - Olive green, Owen Gardner & Sons, Brisbane, turret t/m. Minor marks, a magnificent colour.	Near Mint	75 - 100
121	Blob Top Soda - 6oz - Skinner Bros. Murwillumbah, monogram t/m. Bottle has been polished with signs of pitting. Hard to get.	Polished	125 - 150
122	Blob Top Soda - 6oz - W.G. Livermore, Ipswich, barrels t/m. Bottle has been polished well with minor marks. Hard to get.	Polished	225 - 250
123	Lamont - 6oz - H.Lindsey, Brewer, Aerated Water & Cordial Manufacturer, Hay, NSW. Has surface wear and marks, embossing is an excellent strike.	Very Good	60 - 80
124	Lamont - 6oz - Eclipse Brewing Co, Brisbane, monogram t/m. Surface wear and marks to embossing. An impressive hard to get item.	Very Good	275 - 325
125	Lamont - 6oz - W.S. Eaton & Co. Wagga Wagga, cats head t/m. Minor surface wear and marks, the harder of the lamont variations to get.	Very Good	325 - 375
126	Lamont - 6oz - J. Hempsted & Co, QLD, soda syphon and stick bottle t/m. Bottle has been lightly polished, pitt marks and minor lip nibbles. Hard to get.	Polished	350 - 400
127	Lamont - 6oz - John Cook, Bundaberg, horse t/m. Bottle has been polished and has pit marks but presents very well.	Polished	425 - 475

Nick Rowland Auctions - Auction ONE - May 2015

128	Lamont - 6oz - Light olive green/yellow, Cascade Brewing Co. LTD, Hobart. Bottle has pitting and scratches and some marks from manufacture. Hard to get.	Good	300 - 350
129	Crown Seal - 13oz - Abbot's, Tasmania, eagle t/m. Air bubbles and manufacturing lines, very minor marks. A nice early crown seal.	Near Mint	75 - 95
130	Crown Seal - 13oz - Skittle, Boonah Spa Water Co.Ltd. Water found condition, with opalised effect, has surface wear and pitting. A nice early Brisbane crown seal.	Good	60 - 80
131	Crown Seal - 13oz - West's Aerated Water Works, Southport, monogram t/m. Internal dirt and minor marks, crack/line 3mm behind the 'O' in Southport. A very desirable item.	Good	100 - 150
132	Crown Seal - 13oz - Ipswich Aerated Waters Co., barrells t/m. Bottle has been lightly polished and shows pit marks, wear and nibbels/chips to lip. A very desirable item.	Polished	125 - 175
133	Crown Seal - 13oz - Teal green, George Summers, Charters Towers, kanagaroo/good luck t/m. Bottle in magnificent condition.	Mint	275 - 325
134	Crown Seal - 13oz - Dark olive green, J.D. Butt, Cloncurry, with rifleman t/m. Minor scratches and marks, small burst air bubble to rear neck.	Very Good	275 - 325
135	Crown Seal - 13oz - E. Merritt, Roma, bi-plane t/m. Minor marks to embossing and small slither from rear base.	Very Good	375 - 425
136	Giant Fly Trap - - 35cm tall, 30cm wide, lip nibbles around the round lip and one chip on the inside lip. No flies included.	Very Good	350 - 375
137	Demijohn - 1 gal. - Internal thread, tan top, Sharpe Bros. Australia & New Zealand, health beverages t/m. In great condition still with original wire handle.	Near Mint	60 - 80
138	Demijohn - 1 gal. - Internal thread, tan top, Sharpe Bros, Australia & New Zealand, health beverages t/m (in circle). Manufacturing marks to rear, could do with a good clean. An unusual variation	Very Good	150 - 175
139	Demijohn - Internal thread with applied handle, manufactured by Benidgo Epsom Pottery. DIVIO, Hypo Clorite, Dividene Pty Ltd, Richmond Victoria.	Near Mint	300 - 350
140	Demijohn - 1 gal. - Internal thread with tap spigot, tan top, Sharpe Bros, Australia & New Zealand, hands across the sea t/m. With original wire handle, lots of kiln and firing marks to rear as well as wear and scratches.	Fair	325 - 375
141	Demijohn - 1 gal. - Internal thread, tan top, Sharpe Bros. Australia & New Zealand, hands across the sea t/m. Original wire handle, in lovely condition.	Very Good	300 - 350
142	Cardboard Advertising Sign - - 2ft wide x 3ft high, Gaelic Whiskey, Stirling Bonding Co., Sterling & Craigellachie Distillery, Glenlivet. Picture for astronomers star gazing with a gaelic bottle as the star. A very early sign that need a a frame.	Fair	0 - 0
143	Advertising Mirror - - 1.5ft high x 3ft wide, Castlemaine Lager, Castlemaine Perkins Ltd, Brisbane, Australia, with eagle t/m. Limited edition mirror brought out for a special release beer. 7cm chip to corner and gilding marks. All it needs is a frame.	Fair	425 - 475
144	Face Jug - - Castlemaine Mr. XXXX, manufacturer attributed to Stones Corner Pottery with over-glaze painting. In outstanding condition.	Near Mint	375 - 425
145	Group Lot -Long John McDonald x 3 - 1 x Square Ice Bucket 2 x Cylindrical Water Jugs (one with lip chip)	Good	60 - 80
146	Group Lot - Bell's Scotch Whiskey x 4 - 3 x Water Jugs, Wade Potteries 1 x Ice Bucket	Good	60 - 80
147	Group Lot - Dewar's Scotch Whiskey x 5 - - 3 x Rectangular shaped jugs made by Elischer, Australia 1 x White label water jug made by Wade, London 1 x Imperial water jug made by Maddock, England	Good	80 - 120
148	Group Lot - Grant's and Ballantine's x 6 - 2 x Ballantine's rectangular water jugs, made by Royal Norfolk 2 x Grant's round water jugs, made by Wade, London 1 x Grant's triangular water jug, maker unknown 1 x Grant's blue dish, maker unknown 2 x Ballantines Water jugs	Good	60 - 80
149	Group Lot - The Black Douglas and The Famous Grouse x 5 - 2 x The Black Douglas, rectangular water jugs, maker unknown 2 x The Famous Grouse water jugs, made by Wade, London 1 x The Famous Grouse ash tray, made by Wade, London	Good	100 - 120

Nick Rowland Auctions - Auction ONE - May 2015

150	Group Lot - All The Olds x 6 - 1 x Old Smuggler face jug, made by Regal Norfolk 2 x Old Smuggler water jugs, manufactured by Enoch, Wedgewood and Orchies. 1 x Old Parr water jug, maker Wade, London 1 x Old Raity, made by Wade, London 1 x Old Bushmill's water jug, made by Wade, London	Good	80 - 120
151	Group Lot - Jonny Walker x 6 - 3 x Square water jugs, made by Elischer, Australia 1 x Square water jug, made by Florenz, Australia 2 x Rectangular jugs, made by Staffordshire, England	Good	100 - 150
152	Group Lot - Kings and Princes x 4 - 1 x King George IV, square water jug, made by Wade, London 1 x King George IV, round water jug, made by Wade, London 1 x Prince Charles, water jug, made by Elischer, Australia 1 x Black Prince, water jug, made by Wade, London	Good	40 - 60
153	Group Lot - Queen Anne Scotch Whiskey x 5 - 2 x Round water jugs, made by Wade, London 2 x Small round water jugs, made by Wade, London 1 x Ash tray, made by Wade, London	Good	100 - 150
154	Group Lot - White Horse Scotch Whiskey x 6 - 1 x Lge size horse figurine, made from bakerlite 1 x Sml size horse figurine, made from pottery 1 x Water jug, made by Seton Pottery 1 x Water jug, made by Kirkham Pottery 2 x Dishes, made by Wade, London	Good	175 - 225
155	Face Jug - - Lge size Castlemaine Mr. XXXX face jug, attributed to Brisbane Potteries. Four repaired lip chips, one lge crack to the side of the jug, crazing and other marks.	Good	225 - 275
156	Lamont - 13oz - Eclipse Brewing, Brisbane, monogram t/m. Bottle has light internal haze but otherwise in great condition.	Good	80 - 120
157	Lamont - 13oz - Burton's & Co., Brisbane, monogram t/m. Very minor marks. A great example.	Very Good	150 - 175
158	Lamont - 13oz - J. Hempsted & Co, QLD, soda syphon and stick bottle t/m. Bottle has been lightly polished. Pit marks and wear.	Polished	250 - 275
159	Lamont - 13oz - J. Simpson & Co., Brisbane, King Brand t/m. Bottle has been polished. Pit marks and wear. Hard to get.	Polished	250 - 300
160	Lamont - 13oz - H. Lindsey, Hay, Hills, Tonicobar & Burke, lion t/m. Impact marks to lip with chip, star crack to neck of bottle approx. 3cm long. Scratches and wear. A super rare and desirable bottle.	Fair	100 - 125
161	Lamont - 13oz - W. G. Livermore, East Street, Ipswich, Lavoob Brand t/m. Bottle is in good condition with minor wear and pit marks.	Very Good	60 - 80
162	Lamont - 13oz - John K. Coates, Brisbane, very minor crate wear and small pit marks. One of Brisbane's earliest Lamont bottles.	Very Good	350 - 375
163	Crown Seal - 13oz - Red amber, W. T. Adams, Laidley, with the Adam and Eve t/m. Very minor marks and wear.	Near Mint	150 - 200
164	Crown Seal - 13oz - Dark green, J. D. Butt, cloncurry, riddleman t/m. Small chip to lip, and very minor surface scratches.	Good	250 - 275
165	Blob Top Soda - 13oz - Olive green, A. Vestergaard, Mackay. Manufacturing floor to lip and burst air bubble to side of bottle. some internal rust.	Good	80 - 100
166	Patent - 13oz - H. L. Lindsey Brewer Aerated Water & Cordial manufacturer, Hay, Burke, and Hillston. Lge star crack to shoulder which continues for 4cm, otherwise in perfect condition. A super rare item.	Fair	125 - 150
167	Stick Bottle - 13oz - Moore brand, Newcastle & Maitland, raring lion t/m. Bottle is good condition for its age, may have had some buffing around the lip.	Good	60 - 80
168	Stick Bottle - 13oz - Hogben's patent, J. Gray & Sons, Auckland. Bottle in great condition with some internal haze.	Very Good	40 - 60
169	Stick Bottle - 13oz - Amber, John Hempsted & Co., Brisbane. Very, very minor marks, truly in super condition.	Near Mint	1500 - 1750
170	Dump Soda - Corker - Dark Green/ Black, Johnson's Brewed Ginger Beer, Sydney, Monogram t/m. Pit marks and minor edge chips.	Good	125 - 150
171	Ginger Beer - Dump x 2 - B/T A/W, 1 x R.McLelland Horehound Rockhampton, 1 x R McLelland Rockhampton. Both have chips and imperfections.	Fair	60 - 80
172	Ginger Beer - Dump - B/T,A/W, T.Tristram, Brisbane, Large Monogram t/m (Blue). A large amount of crate wear, small chip to base and a manufacturing flaw to the middle of the transfer. An iconic Brisbane bottle	Fair	50 - 100
173	Ginger Beer - Dump - B/T, A/W, Valley Aerated Water & Cordial.co. Brisbane. "Kaps ALL" t/m. shallow chips to the back of shoulder and side of lip. nice Shelf bottle.	Fair	50 - 100

Nick Rowland Auctions - Auction ONE - May 2015

174	Ginger Beer - Dump - B/T, A/W, C.Sheekey, Goulburn. Monogram t/m, Some minor discolouration but no structural imperfections	Very Good	125 - 150
175	Ginger Beer - Dump - B/T, A/T, H.W. Dark & Co Brisbane, Impressed to shoulder. 1 x minor lip graze and shallow shoulder chip. other very minor marks, a rare early brisbane GB.	Good	125 - 150
176	Ginger Beer - Dump - B/T, A/W, Wm Shambrook, Toogoolowah. Small lip nibbles and rust stain to base otherwise in excellent condition.	Very Good	350 - 400
177	Ginger Beer - Dump - B/T, A/W, W. Shanks & Sons, Caledonian Hill, Gympie. Light rust stains and minor marks.	Good	375 - 425
178	Ginger Beer - Dump - B/T,T/T, C.Simmons Armidale, Crown Brand t/m. Chip to rear lip, probably from opening. Unusual manufacturing lines around the bottle. a good example of a great bottle.	Good	250 - 350
179	Ginger Beer - Dump - B/T, A/T, Impressed, Thomas Stokes, Bunbury, Kangaroo t/m. 1x small chip and wear around lip. Nice bottle with a great strike	Very Good	300 - 400
180	Ginger Beer - Dump - B/T, T/T, H. Tetlow, Launceston, Kangaroo t/m. very minor rust stain to the back, very small chip to base 0.5 cm, A gorgeous piece!!	Near Mint	1800 - 2200
181	Convict Ginger Beer - Dump - Brown Glaze, Impressed shoulder, Fowler, straight line stamp. glaze/crate wear to bottle, manufacturing marks, small slither to base 0.5 cm. A superb early australian piece.	Near Mint	1500 - 2000
182	Convict Ginger Beer - Dump - Grey, clay coloured, side Impressed, Fowler, stright line stamp, stamp has been applied upside down. two chips to base, most likely pull marks, In excellent condition	Near Mint	2000 - 2500
183	Codd - 13oz - Patent, Kops, Brisbane. Surface wear and minor marks,	Good	80 - 120
184	Codd - 13oz - Patent, Brisbane Areated Water Co, Crossed Flags t/m. minor internal haze.	Near Mint	150 - 200
185	Codd - 13oz - Patent, Helidon Spa Water Company, Brisbane, Queensland, Fountain t/m. lightly polished with minor pitting and marks	Polished to Near Mint	125 - 175
186	Codd - 13oz - Patent, J.Cosgrove, Brisbane, Cockatoo t/m, Polished with pitting and surface wear. Great shelf bottle	Polished	80 - 120
187	Marchant - 26oz x 2 - 1 x 26oz internal thread Marchant & Co, with wagon wheel t/m. 1 x 26oz Lamont, Marchant & Co., with halved orange t/m. Both in great condition with minor marks.	Very Good	60 - 80
188	Codd - 26oz - Shepard & Co., Brisbane. In as dug condition, the best we've seen.	Near Mint	450 - 500
189	Codd - 26oz - Midson patent, Shepard & Co., Sandgate, Brisbane. Water found bottle, with surface wear and marks. 3 burst air bubbles. Would benefit from a light polish.	Good	375 - 425
190	Codd - 13oz - One way pour, The National Aerated Water Co., Brisbane. It has a burst air bubble to neck. Manufacturing flaw from applied top, 1.5cm long.	Very Good	1000 - 1500
191	Patent - 13oz - Eclipse Brewing Co., Brisbane, monogram t/m. Minor pitting and marks, lightly polished.	Polished	300 - 600
192	Patent - 13oz - Light amethyst, Eclipse Brewing Co., Brisbane, monogram t/m. Lightly polished, with very minor pitting and marks. Super rare ONLY EXAMPLE KNOWN.	Polished	2500 - 3500
193	Bitters - Small Size - New York Hop Bitters Company (Brisbane), American flag t/m. Stunning condition with very, very minor scratches.	Near Mint	75 - 125
194	Bitters - Large Size - New York Hop Bitters Company, American flag t/m. Originally found underwater with full contents and original cork, previous owner has silconed the top to stop the cork from drying.	Very Good	150 - 175
195	Bitters - - Dark amber/black, Milwaukee Hop Bitters (Sydney), with eagle t/m. Lge crack to rear approx. 9cm, other small cracks come from this main crack. Minor lip chips. Fantastic item that displays well	Poor	1500 - 1750



103



104



105



106



107



108



109



110



111



112



113



114



115



116



117



118



119



120



121



122



123



124



125



126



127



128



129



130



131



132



133



134



135



136



137



138



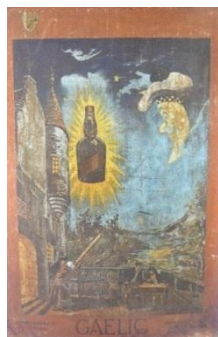
139



140



141



142



143



144



145



146



147



148



149



150



151



152



153



153

If you would like more Pictures or
have any questions regarding
condition of an item please contact
Nick 0401641202 or
nic_rowland@hotmail.com



153



156



157



158



159



160



161



162



170



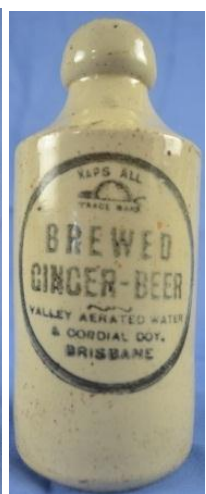
171



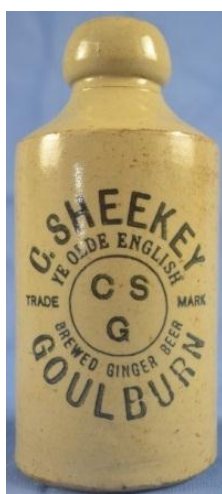
172



173



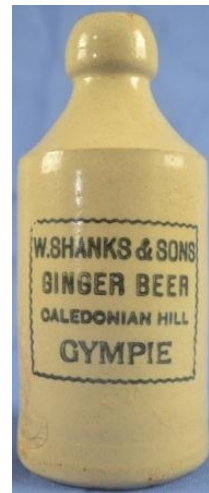
174



175



176



177



178



179



180



181



182



163



164



165



166



167



168



169



183



184



185



186



190



191



192



187



188



189



193



194



195